

Quick Start Installation Guide for IA-4206 Mixer

Step 1: Send/Return Jumpers

The Mixer should have been sent with two jumpers installed on J4, if your mixer does not have these jumpers installed then you will need to install them. One jumper goes between send + (pin 3) and return + (pin 5) on J4. The second jumper goes between send - (pin 4) and return - (pin 6) on J4.

Step 2: Input Connections

Establish your input connections using J1, J2, and J3. Input one is pins 4-6 on J1. Input two is pins 4-6 on J2. Input three is pins 4-6 on J3. Input four is pins 1-3 on J1. Input five is pins 1-3 on J2. Input six is pins 1-3 on J3. For each input connection the first pin is ground (either pin 1 or pin 4), the second pin is positive (either pin 2 or pin 5), and the third pin is negative (either pin 3 or pin 6).

Step 3: Output Connection

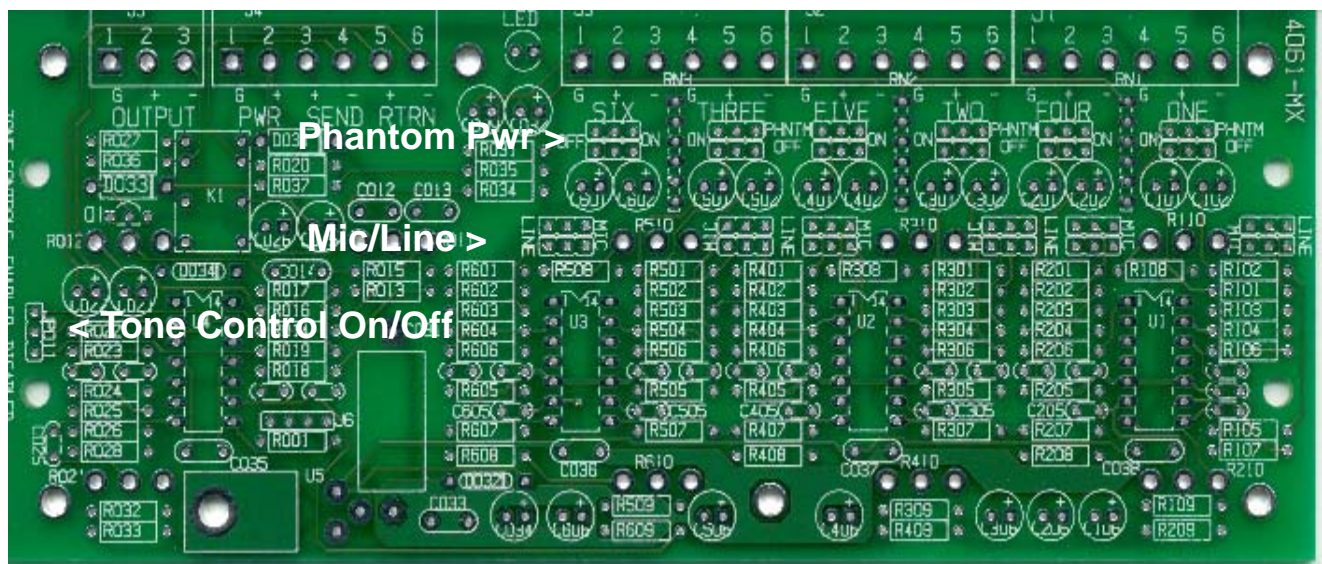
Establish your output connection using J5. Pin 1 is ground, pin 2 is positive, and pin 3 is negative.

Step 4: Power Connection

Now connect your power (24 - 28VDC @ 200mA) via the first two pins of J4. Pin 1 should be ground, and pin 2 should be positive.

You are now ready to turn on and use your IA-4206 Mixer, unless you still want to setup some of its' other features. Those features are discussed below.

J5 **J4** **J3** **J2** **J1**
Output **Pwr/Send/Rtn** **Input 3/6** **Input 2/5** **Input 1/4**



Microphone/Line Input

The IA-4206 is preconfigured for microphone level input, but it can have any or all of the inputs setup for line level signals. To change an input to line level you must move both jumper shunts for that input from Mic to Line. The shunts are located

in a row below each input, and just above the centerline of the mixer board. Remember that going from left to right the inputs are six, three, five, two, four, and one.

Phantom Power On/Off

The IA-4206 provides 24VDC of phantom power for all microphone inputs. If you want phantom power to be available on an input you need to have the shunts just below each input connection set in the “on” position. You can turn off the phantom power by moving the shunts into the “off” position. If you have designated an input for line level input, you should make sure that the phantom power jumpers for that input are in the “off” position.

Tone Controls Enabled/Disabled

The IA-4206 has both a treble and bass control on the front panel. These controls can be disabled by moving the shunt to the bottom two pins of JP011.

©Emtech Electronics, Inc. 1126 No.1200 West Orem, UT 84057 1-866-200-2878